

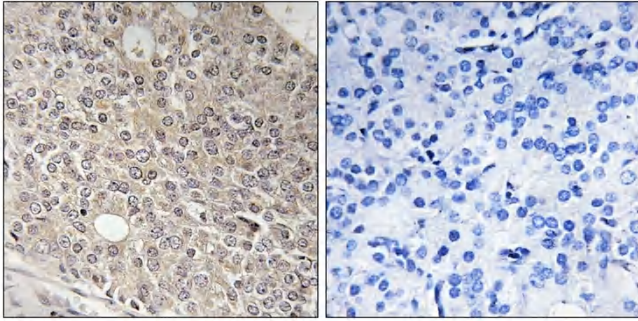


Angiotensin-L1 Polyclonal Antibody

Catalog No	YP-Ab-03697
Isotype	IgG
Reactivity	Human;Mouse
Applications	IHC;IF;ELISA
Gene Name	AMOTL1
Protein Name	Angiotensin-like protein 1
Immunogen	The antiserum was produced against synthesized peptide derived from human AMOTL1. AA range:441-490
Specificity	Angiotensin-L1 Polyclonal Antibody detects endogenous levels of Angiotensin-L1 protein.
Formulation	Liquid in PBS containing 50% glycerol, 0.5% BSA and 0.02% sodium azide.
Source	Polyclonal, Rabbit,IgG
Purification	The antibody was affinity-purified from rabbit antiserum by affinity-chromatography using epitope-specific immunogen.
Dilution	IHC: 1/100 - 1/300. ELISA: 1/10000.. IF 1:50-200
Concentration	1 mg/ml
Purity	≥90%
Storage Stability	-20°C/1 year
Synonyms	AMOTL1; Angiotensin-like protein 1
Observed Band	
Cell Pathway	Cell junction, tight junction .
Tissue Specificity	Brain,Epithelium,Muscle,Skeletal muscle,Skin,Spleen,Testis,Thymus,
Function	similarity:Belongs to the angiotensin family.,
Background	The protein encoded by this gene is a peripheral membrane protein that is a component of tight junctions or TJs. TJs form an apical junctional structure and act to control paracellular permeability and maintain cell polarity. This protein is related to angiotensin, an angiotensin binding protein that regulates endothelial cell migration and capillary formation. Two transcript variants encoding different isoforms have been found for this gene. [provided by RefSeq, Jul 2014],
matters needing attention	Avoid repeated freezing and thawing!
Usage suggestions	This product can be used in immunological reaction related experiments. For more information, please consult technical personnel.



Products Images



Immunohistochemistry analysis of paraffin-embedded human prostate carcinoma tissue, using AMOTL1 Antibody. The picture on the right is blocked with the synthesized peptide.